

Mezzanine Inspection Report

Date: 12/04/14	Station Name: D13 New Carrollton	Mezzanine #: 068	Completed By: Mike Butler
-----------------------	---	-------------------------	----------------------------------

Summary

Pull string installation was completed for communication duct in faregate array. However, it was not possible to complete video scoping in both comm. and power faregate ducts because the ducts are at capacity and have excess wiring and wire nuts causing obstructions.

Video and pull string installation was completed in power duct between Kiosk and Handhole. However, it was not possible to complete video scoping and pull string installation in power duct between Handhole, In-floor Trench and AFC Panel due to duct collapses.

Scanning was conducted to identify a new power route to the AFC Panel. The existing duct running between Kiosk to Handhole will be utilized for the new route. A new duct is proposed from existing Handhole to a proposed adjacent handhole, which will run towards the outside wall of Room C100 and feed into a second proposed handhole. The proposed duct will then core drill through the base of the wall and run up vertically into a proposed junction box in Room C100. A proposed overhead conduit will run from new junction box to AFC panel, by core drilling through the two walls leading to Room C105 and C106.

Refer to photos and drawings for further information.

Photos and drawings are for reference purposes only; see new schematic drawing/proposed pathway on last page.

Scoping of Faregate Array(s)

Task	Yes/No	Notes
Communications Duct – Upper Faregate Array (10 gates)		
Was video scoping completed for the entire duct run?	No	Refer to "WMATA New Carrollton Fairgates Comm 3inch duct.avi"
Were pull strings installed at all faregates in the array?	Yes	
Were there any obstructions or blockages? Provide details of type and specific location.	Yes	The camera was obstructed by excess wiring and wire nuts in the duct.
Is the duct at capacity? Provide additional details about the dimensions of ducts and number of wires.	Yes	3" walker duct with more than 15 wires.
Power Duct - Upper Faregate Array (10 gates)		
Was video scoping completed for the entire duct run?	No	Refer to "WMATA New Carrollton Fairgates Power 6inch duct.avi"
Were there any obstructions or blockages? Provide details of type and specific location.	Yes	The camera was obstructed by excess wiring and wire nuts in the duct.
Is the duct at capacity? Provide additional details about the dimensions of ducts and number of wires.	Yes	6" walker duct with more than 15 wires.


Scoping of Power Duct - Kiosk to AFC Panel		
Task	Yes/No	Notes
Kiosk to Handhole (Distance: 40')		
Was video scoping completed for the entire duct / conduit run?	Yes	Refer to "WMATA New Carrollton Power kiosk to H.H.1 6inch duct.avi"
Was pull string installed?	Yes	
Were there any obstructions or blockages? Provide details of type and specific location.	Yes	At the handhole, there is a lot of debris and muck buildup; however, the duct is in good condition.
Is the duct / conduit at capacity? Provide additional details about the dimensions of duct / conduit and number of wires.	No	6" duct with less than 10 wires.
Handhole 1 to In-floor Trench (Distance: 46')		
Was video scoping completed for the entire duct / conduit run?	No	Refer to "WMATA New Carrollton Power H.H.1 to floor trough 6inch duct.avi"
Was pull string installed?	No	
Were there any obstructions or blockages? Provide details of type and specific location.	Yes	Duct is collapsed 10' from Handhole at the entrance to room C100.
Is the duct / conduit at capacity? Provide additional details about the dimensions of duct / conduit and number of wires.	No	6" duct with less than 10 wires.
In-floor Trench to AFC Panel (Distance: 12')		
Was video scoping completed for the entire duct / conduit run?	No	Video scoping not possible.
Was pull string installed?	No	
Were there any obstructions or blockages? Provide details of type and specific location.	Yes	Collapsed duct at entrance.
Is the duct / conduit at capacity? Provide additional details about the dimensions of duct / conduit and number of wires.	No	6" duct with less than 10 wires.
Observations / Issues / Next Steps		
The proposed power route between Kiosk and AFC Panel is 126', including 40' of existing duct, 16' of proposed duct and 70' of proposed conduit.		
Sign Off		
	GFP Representative	WMATA PRGM
Name:	Mike Butler	
Signature:		
Date:	03/31/15	

Photo #1: Existing and proposed ducts on mezzanine floor

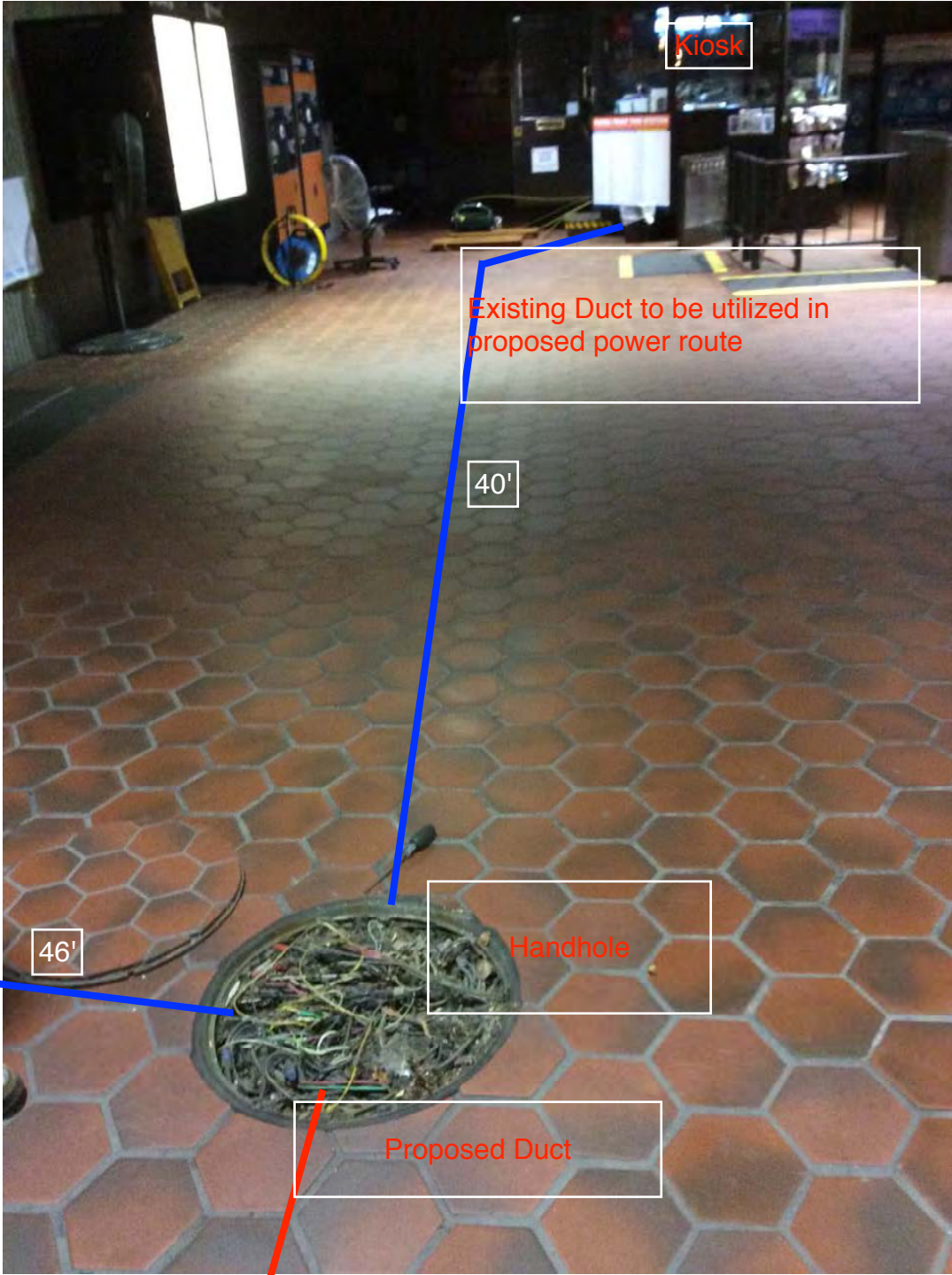


Photo #2: Existing and proposed duct on mezzanine floor

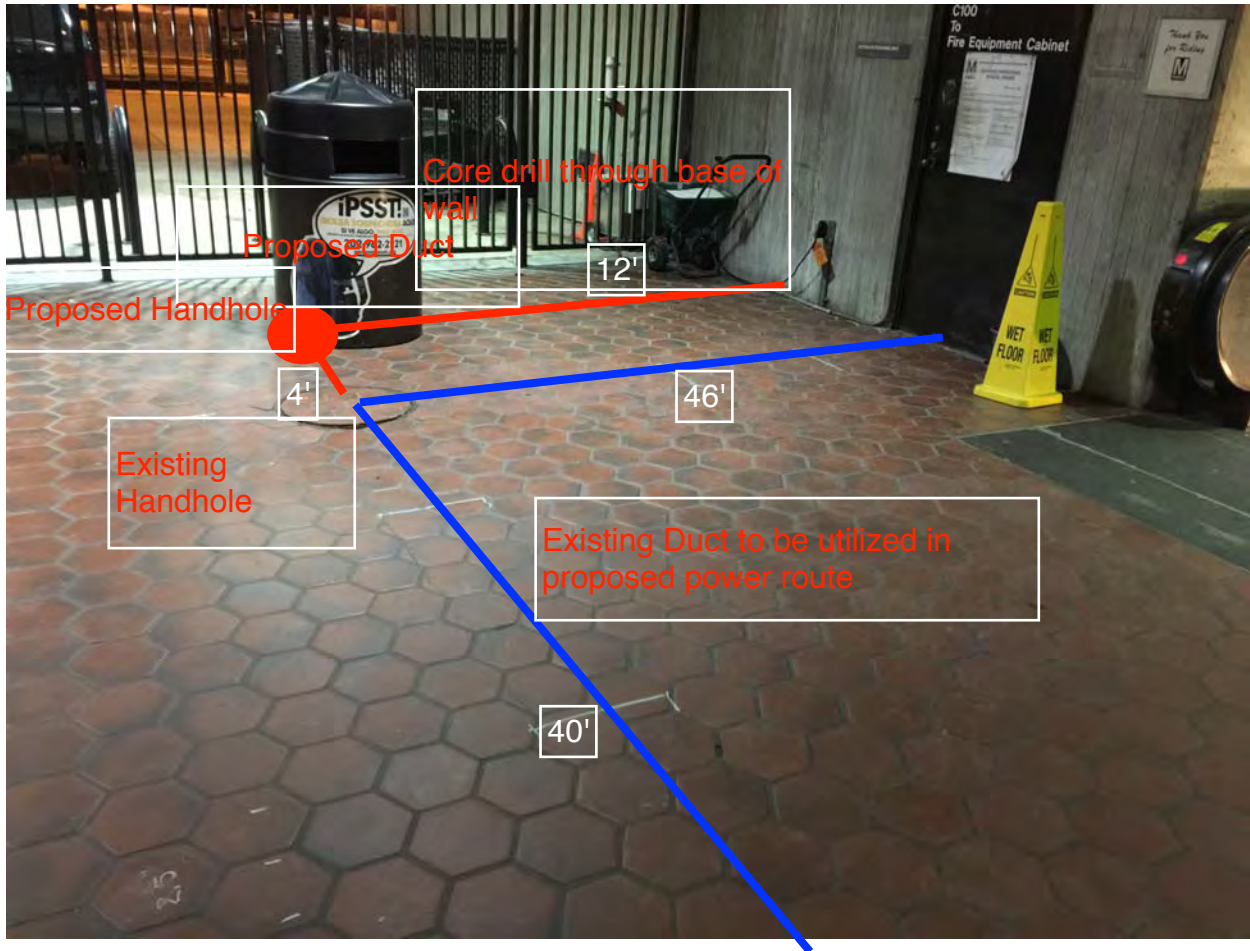


Photo #3: Existing duct and proposed conduit route

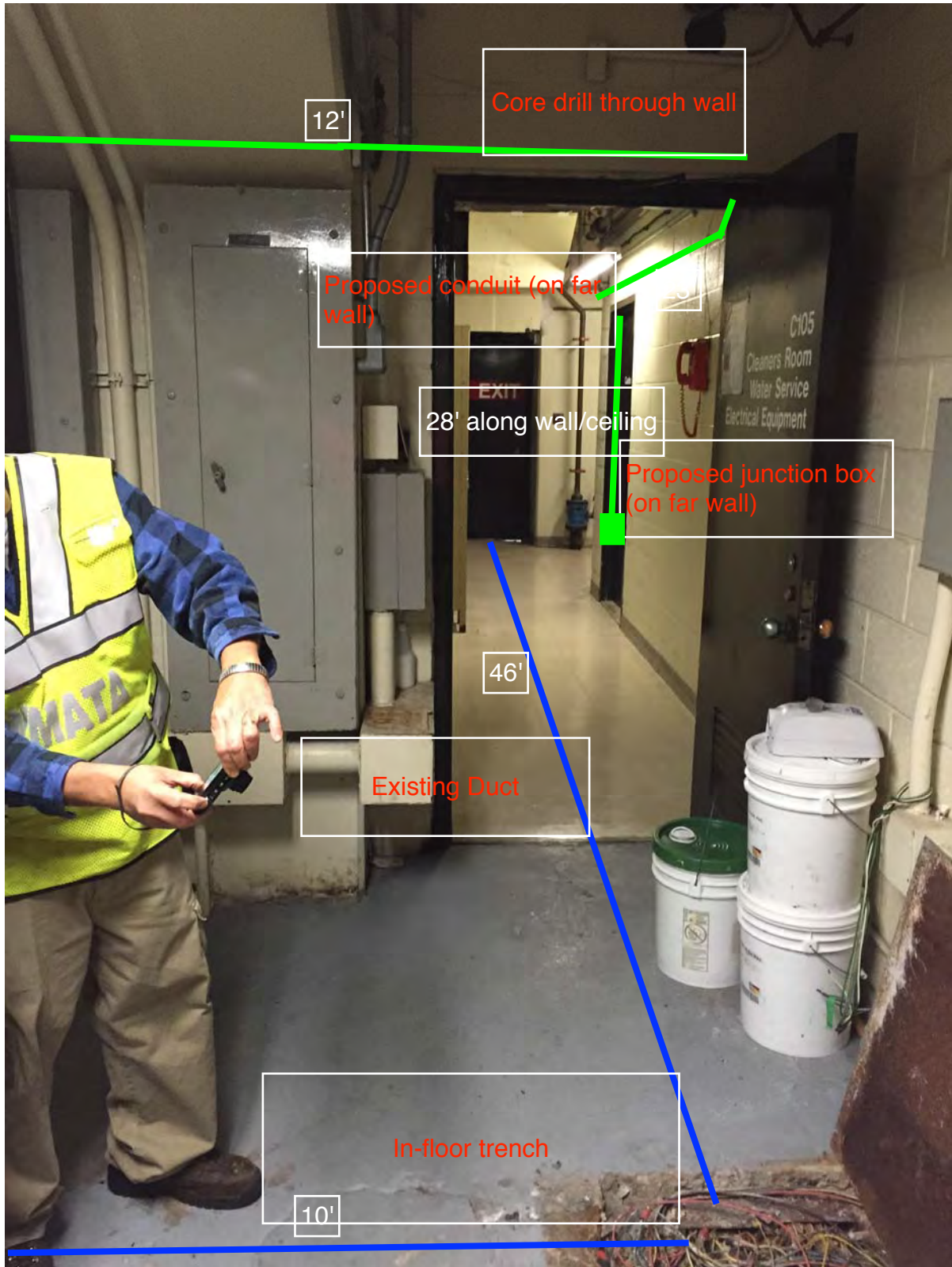


Photo #4: Existing duct route

